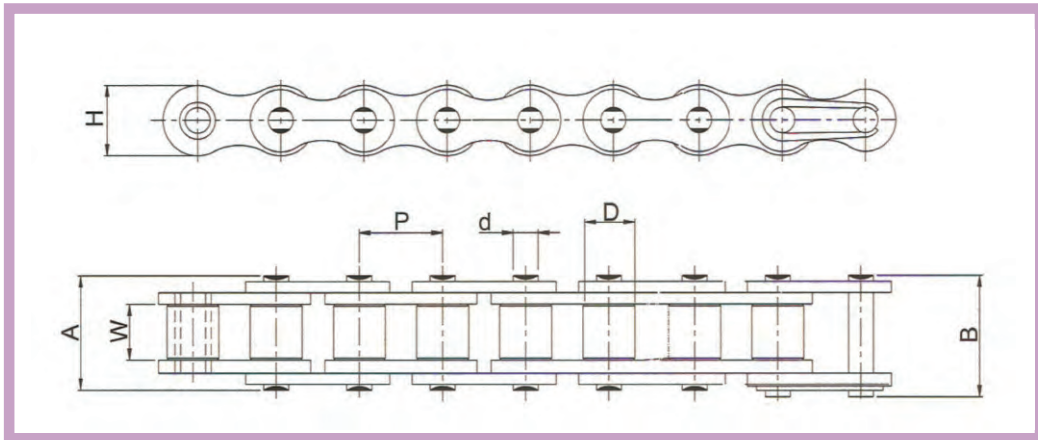


ZAC CHAINS

ZAC chains are built to provide outstanding corrosion resistance, with the same strength and breaking load values of standard chains. A special coating fights corrosion in the most aggressive environments. Zac chain superiority has been proven against Nickel, Zinc and other plated chains.



CORROSION RESISTANT CHAINS PLATED CHAINS – EUROPEAN SERIES



Nickel plated chains : These chains are ideal for use in light corrosive atmosphere or where good appearance is required.

Zinc plated chains : These chains are used in corrosive atmosphere and outdoor applications

ZAC chains : Excellent corrosion resistance with same strength and breaking load values as standard chains.

The chains are designed to withstand a minimum of 250 hrs of salt spray testing as per ASTM B 117.

Intl Ref no.	Pitch (P)	Width between Inner Plates (W) MIN	Roller Dia (D) MAX	Plate Height (H) Max	Bearing Pin Dia (d) MAX	Width over bearing Pin (A) MAX	Width over joint Fasteners (B) MAX	Projected bearing Area (sq.cm)	Avg Weight per metre (Kg)	Tensile Strength (Kg) MIN		
										NP	ZP	ZAC
04B-1	6.00	2.80	4.00	5.00	1.85	7.40	10.30	0.08	0.12	300	260	300
05B-1	8.00	3.00	5.00	7.10	2.31	8.60	11.70	0.11	0.18	510	430	510
06B-1*	9.525	5.72	6.35	8.20	3.28	13.50	16.80	0.28	0.40	920	780	920
08B-1	12.70	7.75	8.51	11.80	4.45	17.00	20.90	0.50	0.68	1840	1560	1840
10B-1	15.875	9.65	10.16	14.70	5.08	19.60	23.70	0.67	0.91	2290	1940	2290
12B-1	19.05	11.68	12.07	16.10	5.72	22.70	27.30	0.88	1.12	2960	2510	2960
16B-1	25.40	17.02	15.88	21.00	8.27	36.10	41.50	2.07	2.59	6120	5200	6120

*Straight Sided Plate

Note :

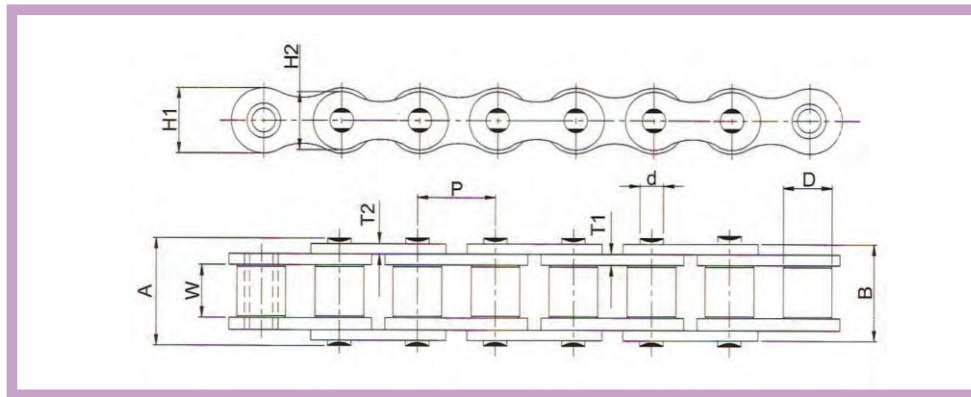
NP - Nickel Plated

ZP - Zinc Plated

ZAC - Special Coating For High Corrosion Resistance

Also available with straight side plates and in Double , Triple strands

CORROSION RESISTANCE CHAINS PLATED CHAINS – AMERICAN SERIES



Nickel plated chains : These chains are ideal for use in light corrosive atmosphere or where good appearance is required.

Zinc plated chains : These chains are used in corrosive atmosphere and outdoor applications

ZAC chains : Excellent corrosion resistance with same strength and breaking load values as standard chains.

The chains are designed to withstand a minimum of 250 hrs of salt spray testing as per ASTM B 117.

Intl Ref no.	Pitch (P)	Width between Inner Plates (W) MIN	Roller Dia (D) MAX	Plate Height (H) Max		Plate Thickness		Bearing Pin Dia (d) MAX	Width over bearing Pin (A) MAX	Width over joint Fasteners (B) MAX	Projected bearing Area (sq.cm)	Avg Weight per metre (Kg)	Tensile Strength (Kgf) MIN		
				IP (H1) MAX	OP (H2) MAX	IP (T1)	OP (T2)						NP	ZP	ZAC
25-1	6.35	3.18	3.30	5.80	5.25	0.75	0.75	2.31	7.80	9.60	0.11	0.13	360	300	250
35-1	9.525	4.68	5.08	8.65	7.48	1.25	1.25	3.59	12.18	13.18	0.27	0.34	800	670	570
40-1*	12.70	7.85	7.92	12.00	10.41	1.50	1.50	3.96	17.80	21.70	0.44	0.63	1440	1220	1030
41-1	12.70	6.30	7.80	9.60	8.30	1.30	1.30	3.60	14.80	18.70	0.30	0.40	680	570	490
50-1	15.875	9.40	10.16	15.00	13.00	2.00	2.00	5.08	21.80	25.90	0.71	1.04	2270	1920	1630
60-1	19.05	12.58	11.91	18.00	16.60	2.39	2.39	5.94	26.90	31.50	1.04	1.52	3240	2750	2340
80-1	25.40	15.75	15.88	24.10	20.80	3.15	3.15	7.92	33.50	38.90	1.77	3.08	5780	4910	4170

Note :

NP - Nickel Plated

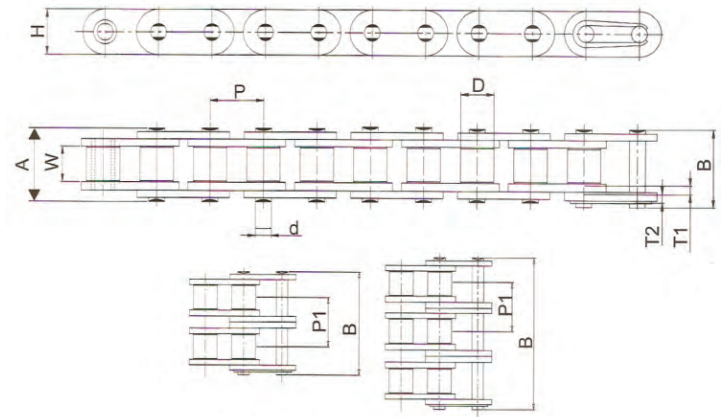
ZP - Zinc Plated

ZAC - Special Coating For High Corrosion Resistance

Also available with straight side plates and in Double , Triple strands

CORROSION RESISTANT CHAINS

STAINLESS STEEL CHAINS – EUROPEAN SERIES



Stainless steel (SS 3040 chains with solid rollers are designed to offer excellent corrosion resistance and are used in atmosphere where chains are exposed to chemical, water and heat. They can operate in a temperature range of -0 deg to 400 deg c

SINGLE STRAND

Intl Ref no.	DIAMOND Chain No.	Pitch (P)	Width between Inner Plates (W) MIN	Roller Dia (D) MAX	Plate Height (H) Max	Bearing Pin Dia (d) MAX	Width over bearing Pin (A) MAX	Width over joint Fasteners (B) MAX	Transverse Pitch (P1)	Projected bearing Area (sq.cm)	Avg Weight per metre (Kg)	Tensile Strength (Kgf) MIN
05B-1	D05B01SS01	8.00	3.00	5.00	7.10	2.31	8.60	11.70	-	0.11	0.39	300
06B-1*	D06101SS01	9.525	5.72	6.35	8.20	3.28	13.50	16.80	-	0.28	0.44	650
08B-1	D08301SS01	12.70	7.75	8.51	11.80	4.45	17.00	20.90	-	0.50	0.70	1200
10B-1	D10101SS01	15.875	9.65	10.16	14.70	5.08	19.60	23.70	-	0.67	0.92	1450
12B-1	D2001SS01	19.05	11.68	12.07	16.10	5.72	22.70	27.30	-	0.88	1.12	1700
16B-1	D16001SS01	25.40	17.02	15.88	21.00	8.27	36.10	41.50	-	2.07	2.59	4000

DOUBLE STRAND

06B-1*	D06102SS01	9.525	5.72	6.35	8.20	3.28	23.80	27.10	10.24	0.56	0.74	1000
08B-2	D08302SS01	12.70	7.75	8.51	11.80	4.45	31.00	34.90	13.92	1.00	1.40	2160
10B-2	D10102SS01	15.875	9.65	10.16	14.70	5.08	36.20	40.30	16.59	1.34	3.00	2900
12B-2	D2002SS01	19.05	11.68	12.07	16.10	5.72	42.20	46.80	19.46	1.76	2.21	3800
16B-2	D16002SS01	25.40	17.02	15.88	21.00	8.27	68.00	73.40	31.88	4.14	5.08	7590

TRIPLE STRAND

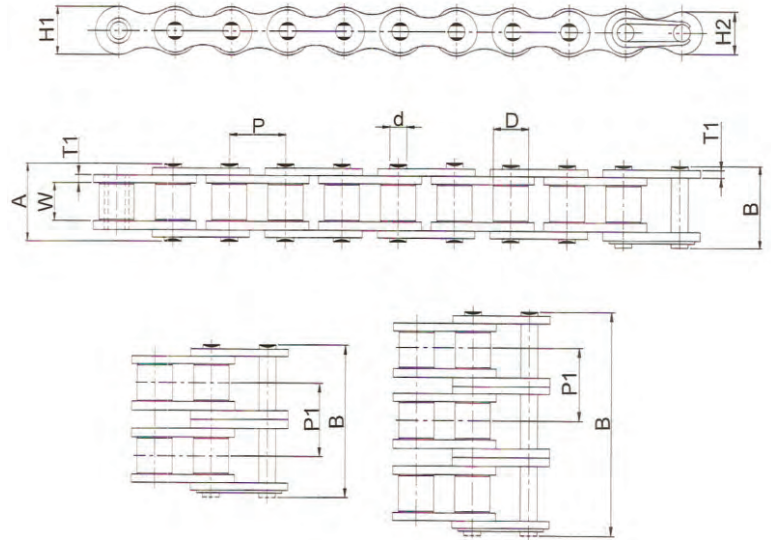
06B-3*	D06103SS01	9.525	5.72	6.35	8.20	3.28	34.00	37.30	10.24	0.84	1.11	1820
08B-3	D08303SS01	12.70	7.75	8.51	11.80	4.45	44.90	48.80	13.92	1.00	1.31	3600
10B-3	D10103SS01	15.875	9.65	10.16	14.70	5.08	52.80	56.90	16.59	1.34	1.79	4300
12B-3	D12003SS01	19.05	11.68	12.07	16.10	5.72	61.70	66.30	19.46	1.76	2.22	5100
16B-3	D16003SS01	25.40	17.02	15.88	21.00	8.27	99.90	105.30	31.88	4.14	5.03	11900

*Straight Contour

Note : Straight side plate stainless steel chains are also available

Spares available for all models

CORROSION RESISTANT CHAINS STAINLESS STEEL CHAINS – AMERICAN SERIES



SINGLE STRAND

Int'l Ref no.	DIAMOND Chain No.	Pitch (P)	Width between Inner Plates (W) MIN	Roller Dia (D) MAX	Plate Height (H) Max		Plate Thickness		Bearing Pin Dia (d) MAX	Width over bearing Pin (A) MAX	Width over joint Fasteners (B) MAX	Transverse Pitch (P1)	Projected bearing Area (sq.cm)	Avg Weight per metre (Kg)	Tensile Strength (Kgf) MIN
					IP	OP	IPT1	OPT2							
					H1 (MAX)	H2 (Max)									
35-1	B 06A 01 SS 01	9.525	4.68	5.08	8.65	7.48	1.25	1.25	3.59	12.18	13.18	-	0.27	0.33	570
40-1	D 08A 01 SS 01	12.70	7.85	7.92	12.00	10.40	1.50	1.50	3.96	17.80	21.80	-	0.44	0.63	1045
50-1	D 10 201 SS 01	15.875	9.40	10.16	15.00	13.00	2.00	2.00	5.08	21.80	25.90	-	0.71	1.04	1710
60-1	D 12 101 SS 01	19.05	12.58	11.91	18.00	16.60	2.40	2.40	5.94	26.90	31.50	-	1.04	1.53	2280
80-1	D 16 101 SS 01	25.40	15.75	15.88	24.10	20.80	3.00	3.00	7.92	33.50	38.90	-	1.77	2.59	3700

DOUBLE STRAND

40-2	D 08A 02 SS 01	12.70	7.85	7.92	12.00	10.40	1.50	1.50	3.96	32.30	36.20	14.38	0.88	1.25	2090
50-2	D 10 202 SS 01	15.875	9.40	10.16	15.00	13.00	2.00	2.00	5.08	37.90	44.00	18.11	0.142	2.05	3420
60-2	D 12 102 SS 01	19.05	12.58	11.91	18.00	16.60	2.40	2.40	5.94	49.80	54.40	22.78	2.08	3.01	4560
80-2	D 16 102 SS 01	25.40	15.75	15.88	24.10	20.80	3.00	3.00	7.92	62.70	68.10	29.29	3.54	4.17	7400

TRIPLE STRAND

40-3	D 08A 03 SS 01	12.70	7.85	7.92	12.00	10.40	1.50	1.50	3.96	45.30	49.20	14.38	1.32	1.90	3300
50-3	D 10 203 SS 01	15.875	9.40	10.16	15.00	13.00	2.00	2.00	5.08	56.80	60.90	18.11	2.13	3.12	5200
60-3	D 12 103 SS 01	19.05	12.58	11.91	18.00	16.60	2.40	2.40	5.94	72.60	77.20	22.78	3.12	4.58	7500
80-3	D 16 103 SS 01	25.40	15.75	15.88	24.10	20.80	3.00	3.00	7.92	91.90	97.10	29.29	5.31	6.04	12500